



SEVEN OCEAN STEEL
ALWAYS A STEP AHEAD

MUMBAI, INDIA

□ COMPANY PROFILE

Seven Ocean Steel is known worldwide as the most competitive group in the world of Stainless Steel, High Nickel Alloys & Carbon Steel having its headquarters in **Mumbai – India**.

The Group was incorporated in the year 1975 & since last 4 decades, from the journey of Trader to Manufacturer, the group has achieved excellence in every business & is dedicated in providing “**Quality with low Cost Production**” and thus led to “**Customer Satisfaction and Long term Business relationship with all its esteem Customers**”.

The Group has drawn together under the one roof of the total spectrum of Trading, Stockholding & Processing activities in Stainless Steel, Carbon Steel, High Nickel Alloy, Brass, Aluminum in the shape of Pipes, Tubes, Rods, Sheets, Plates, Wires, Angles, Coils, Strips & **Manufacturing** the entire range of Pipes Fittings such as Butt Weld & Forged Socket weld & Screwed Fittings such as Elbow, Tees, Reducers, Stub ends, Flanges, Caps, Nipples, Couplings, Elbowlets, Sockolets, Weldolets, Nuts, Bolts, Studs, Washers & also into Manufacturing of Precision Instrumentation Fittings & Valves.

The Group has a setup of overall **2 Manufacturing Plants** facilities in India, with more than 150 dedicated people, working as partners to continuously win Customers Confidence and provide Quality & after Sales Service.

Our company is associated with **Government Approved laboratories** to ensure that whatever materials supplied by us are as per required specification. We can also supply under Third Party Inspection Agencies like: DNV, PDIL, TUV, SGS, EIL, I.B.R, Bureau Veritas, JH&G, Lloyd’s, Etc.

TIMELINE

1975	Started As A Trading Company in Stainless Steel Products i.e. Pipes, Pipes Fittings & Round Bars.
1980	Expansion in the Various Material From Stainless Steel to Carbon Steel & Alloy Steel Pipes, Pipes Fittings & Round Bars
1992	Well Known as Stockiest upto 1000 MT For Carbon Steel Pipes. (Warehouse in Various Locations in India)
2002	Diversifying its business Products to Instrumentation Fittings.
2004	1st Manufacturing Plant of Instrumentation Fittings In Western Part of Mumbai.
2006	Started Exporting Pipes, Pipe Fittings & Instrumentation Fittings.
2007	2nd Manufacturing Plant of Instrumentation Fittings & Valves at the border of Maharashtra & Gujarat i.e. Umbergaon
2008	Import & Stockiest of Inconel, Monel, High Nickel Alloy Pipes & Pipe Fittings.
2012	3rd Manufacturing Plant of Precision CNC Turned Components in Gujarat.
2015	Authorized Distributer of ERW Pipes & Seamless Pipes of Jindal & Welspun.
2016	Exporter & Stockiest of Round bars in the material Stainless Steel, Brass, Aluminum, Bronze, Gun Metal & High Nickel Alloys
2017	More To Come...

MISSION

“The Group aims to strengthening its global market position by developing its product range across its business segments & capitalize on regional expansion opportunities.” More focuses are being made on:

- Product Quality
- Service Network
- Brand Awareness
- Quality with low Cost Production



VISION

Is to expand its market positions to become the world's leader in Stainless Steel, High Nickel Alloys & Carbon Steel by pursuing world-leading Manufacturing Technologies, Innovative Solutions, and Quality & Customer Service

□ PRODUCT RANGE & SPECIFICATION

Stockiest

Pipes & Tubes

Round Bars & Threaded Round Bars

Sheets, Plates & Coils

Wires

Structures : Angle & Channel



Manufacturer

Instrumentation Tube Fittings & Valves

Butt Weld & Forged Socket weld & Screwed Fittings

Fasteners

Flanges

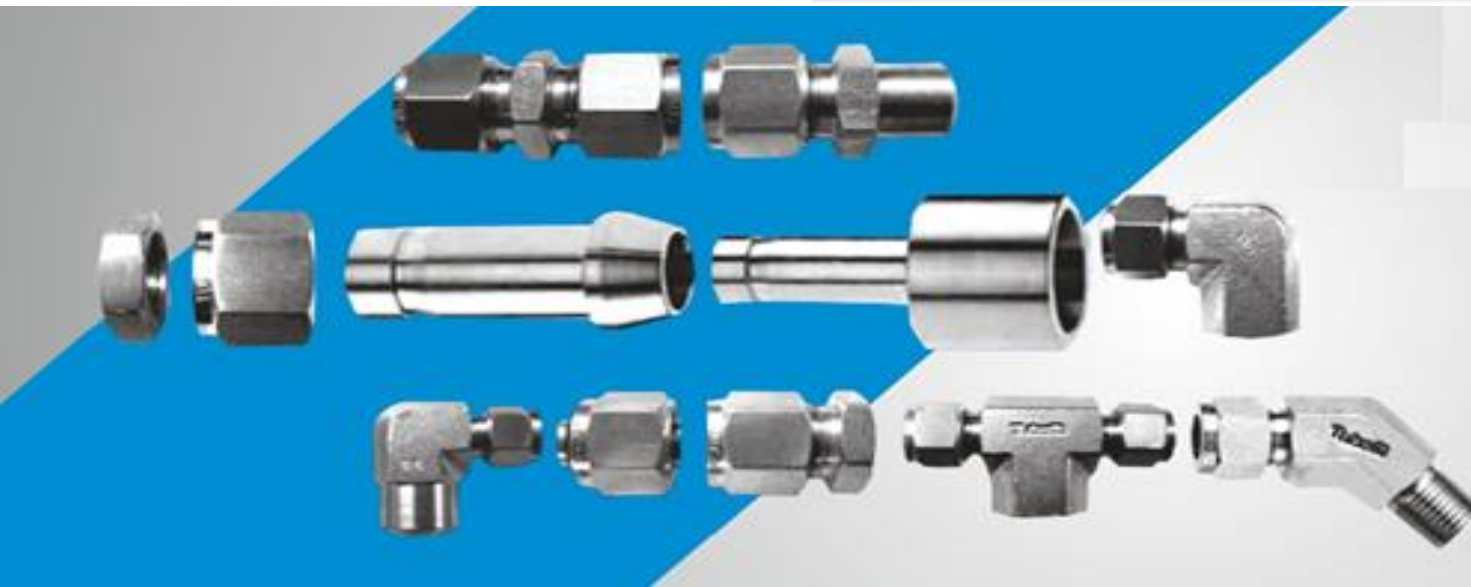
CNC Turned Components

Air Header

Syphons

Condensate Pots

Thermowell



Material:

Stainless Steel, Carbon Steel, Duplex, Super Duplex, Alloy Steel, Inconel, Monel, Titanium, Tantalum, Bismuth, Hastalloy, Copper, Brass, Aluminum, Bronze, Zinc, Lead, Gun Metal, Aluminum Bronze AB2, Phosphorous Bronze.

Standard: DIN, ISO, BS, EN, IS, ASTM, AMS, AISI, ASME, UNS & other European & American Standards.

Packing: Standard and also as per the Customers' Requirement

Length: Standard and also as per the Customers' Requirement

PIPES

Sizes (Seamless): 1/2" NB - 20" NB

Sizes (ERW): 1/2" NB - 20" NB

Sizes (Spiral): 24" NB - 72" NB

Sizes (LSAW): 24" NB - 90" NB

Wall Thickness: Schedule 5S - Schedule XXS (heavier on request)

Types: Round, Square & Rectangular.

End Preparation: Plain End Pipe, Beveled End Pipe, Threaded end Pipe, Flanged End Pipe.

Material:

Stainless Steel: ASTM A312 TP 303, 304, 304L, 304H, 310, 316, 316L, 316Ti, 317, 317L, 321, 347, 201, 202, 409Ti, 410, 420, 416, 430, 430F, 431.

Carbon Steel: ASTM A53 Gr. B, A106 Gr. B, API 5L Gr. B, API 5L Gr. X42/46/52/56/60/65/70, A672 Boiler Pipe.

Low Temperature Carbon Steel: A333 Gr. 3/Gr. 6.

Duplex Steel: 2205, 31803, UNS S31803 (F51), UNS S32205 (F60/1.4462)

Super Duplex: 2507, UNS S32750 (F53/1.4410), S32760 (F55/1.4501), UNS S32550, UNS S39274

Alloy Steel: ASTM A335 Gr. P5/ P9/ P11/ P22/ P91.

Nickel Alloys: Inconel, Monel, Titanium, Tantalum, Bismuth, High Speed Steel, Hastalloy C276.

Non Ferrous Metal: Copper, Brass, Bronze, Zinc, Lead, Aluminum.

Make: TubaCex, Sandvik, Sumitomo, Jindal, MSL, ISMT, PSL, OCTL, Ratnamani, Welspun, Tenaris, Schoeller bleckmann, RathGibson, Schulz, Marcegaglia, Mueller Copper Products, TPCO, Corus, Mahalaxmi Seamless, Kobe, Nakata, and many more.



PIPES FITTINGS

FLANGES

Sizes: 1/2" NB to 48" NB.

Class: 150#, 300#, 600#, 900#, 1200#, 1500#, 2500#, Table D, Table E.

Thread: F-NPT, BSPT, ISO or ACME Threads

Specification: ASTM, AISI, ASME, DIN, UNS

Types: Blind Flanges, Spectacle Blinds, Slip-on, Weld neck, Blind, Socket weld, Threaded, Lap joint, Ring Joint, Threaded Reducing, Orifice, Reducing Flanges, Square Flanges, WNRF Flanges, BLRF Flanges, SORF Flanges, RTJ Flanges, Plate Flanges, SAE Flanges & As Per Customer's Specification.

Material:

Stainless Steel: 201, 201Cu, 202, 202Cu., 303, 304, 304L, 304H, 310, 316, 316L, 316Ti, 317, 317L, 321, 347, 409Ti, 410, 420, 420B, 416, 430, 430F, 431.

Carbon Steel: A105, A181, A350 LF2/LF3/LF6, A694 F42/F46/F52/F56/F60/F65/F70.

Duplex Steel: 2205, 31803, UNS S31803 (F51), UNS S32205 (F60/1.4462)

Super Duplex: 2507, UNS S32750 (F53/1.4410), S32760 (F55/1.4501), UNS S32550, UNS S39274

Alloy Steel: A182 F5/F9/F11/F12/F22/F91/F92.

Copper: C54400, C63000, C83600, C84400, C86300, C83300, C85400, C86700, C89550, C61400, C92200, C93700, C95200, C95800.

Nickel Alloys: Nickel N02200, N02201, Inconel N06600, N06601, N00625, N07718, N08800, N08810, N08811, N09925.

Others: Monel, Hastalloy, Copper, Brass, Bronze, Zinc, Lead, Aluminum (Alloy 5022/5083/5086/6061/6066), Titanium (Grade 1/2/4/5/7/9/12), Zirconium (R60702, R60705), Copper Nickel (C70600, C71500), **Tantalum** (R05200, R05252, R05255, R5400)



BUTT WELD FITTINGS

Product Range: Elbow, Tee, Reducer, Return Bends, Stub – Ends, Cap, Collar, Cross.

Size (Seamless): 15” NB to 600” NB

Size (Welded): 150 NB to 1200 NB

Wall Thickness: Schedule 5S - Schedule XXS (heavier on request)

Specification: ASTM, AISI, ASME, DIN, UNS

Description:

Elbow: 45, 90, 180 Degree Elbow in seamless and welded Form in long radius and short radius

Reducer: Concentric Reducer & Eccentric Reducer

Tee: Equal Tee, Unequal Tee

These are designed as per the international quality standards and are leak proof and resistant to corrosion.

Material:

Stainless Steel: 201, 201Cu, 202, 202Cu, 303, 304, 304L, 304H, 310, 316, 316L, 316Ti, 317, 317L, 321, 347, 409Ti, 410, 420, 420B, 416, 430, 430F, 431.

Carbon Steel: ASTM A234 WPB, A420 WPL3, A420 WPL6, MSS-SP-75 WPHY 42/46/52/56/60/65/70.

Duplex Steel: 2205, 31803, UNS S31803 (F51), UNS S32205 (F60/1.4462)

Super Duplex: 2507, UNS S32750 (F53/1.4410), S32760 (F55/1.4501), UNS S32550, UNS S39274

Alloy Steel: ASTM A234 WP1/WP5/WP9/WP11/WP22/WP91. **Chrome Moly Steel** – A182 F5/F9/F11/F12/F22/F91/F92.

Nickel Alloys: Inconel, Monel, Titanium, Tantalum, Bismuth, Hastalloy.

Non Ferrous Metal: Copper, Brass, Bronze, Zinc, Lead, Aluminum, Gun Metal.

Application: Water supply pipe lines, Industrial Food processing pipeline and in various other fluid transfer piping systems.



FORGED SOCKET WELD & SCREWED FITTINGS

Product Range:

Elbow, Tee, Union, Cross, Weldolet, Elbowlet, Sockolet, Threadolet, Nipolet, Letrolet,
Full Coupling, Half Coupling, Reducing Coupling, Pipe Cap, Hex Head Bushing, Hex Head Plug,
Square Head Plug, Round Head Plug, Swage Nipple, Hex Nipple, Pipe Nipple, Barrel Nipple, Parallel Nipple,
Hose Nipple, Street Elbow, Bull Plug, Boss, Adapter, Long Stubend, Short Stubend, End Cap



Size (Socket weld & Threaded): 15" NB to 100" NB

Class: 3000#, 6000#, 9000#.

Specification: ASTM, AISI, ASME, DIN, UNS

Material:

Stainless Steel: ASTM A182 F201, 201Cu, 202, 202Cu, 303, 304, 304L, 304H, 310, 316, 316L, 316Ti, 317, 317L, 321, 347, 409Ti,
410, 420, 420B, 416, 430, 430F, 431

Carbon Steel: ASTM A105, A694 F42/46/52/56/60/65/70, A350 LF3/LF2.

Duplex Steel: 2205, 31803, UNS S31803 (F51), UNS S32205 (F60/1.4462)

Super Duplex: 2507, UNS S32750 (F53/1.4410), S32760 (F55/1.4501), UNS S32550, UNS S39274

Alloy Steel: ASTM A182 F1/F5/F9/F11/F22/F91.

Nickel Alloys: Inconel, Monel, Titanium, Tantalum, Bismuth, Hastalloy.

Non Ferrous Metal: Copper, Brass, Bronze, Zinc, Lead, Aluminum, Gun Metal.



ROUND BARS

Size: Drawn & Turned from 1mm to 150 & Forged Bright Bar 150 - 400mm

Length: 3 Meter to 7 Meter and also as per Customers requirement.

Shape: Round, Square, Hex, Rectangle

Type: Black, Bright & Threaded

Material:

Stainless Steel:

200: 201, 201Cu, 202, 202Cu.

300: 303, 304, 304L, 304H, 310, 316, 316L, 316Ti, 317, 317L, 321, 347.

400: 409Ti, 410, 420, 420B, 416, 430, 430F, 431.

Carbon Steel: EN-8, EN-9, C-40, C-45, C-55, SAE 1040, SAE 1045 and SAE 1050.

Duplex Steel: 2205, 31803, UNS S31803 (F51), UNS S32205 (F60/1.4462)

Super Duplex: 2507, UNS S32750 (F53/1.4410), S32760 (F55/1.4501), UNS S32550, UNS S39274

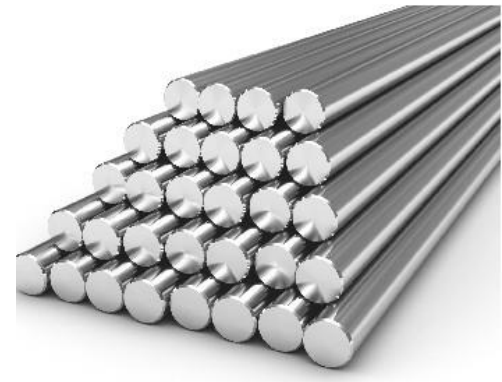
Alloy Steel: EN 19, EN 24, EN 31, EN 36, EN 353, SAE 8620.

Nickel Alloys: Inconel, Monel, Titanium, Tantalum, Bismuth, High Speed Steel (M2, M3, M4, M35, M42), Hastalloy (C276)

Non Ferrous Metal: Copper, Brass, Bronze, Zinc, Lead, Aluminum, Gun Metal, Aluminum Bronze AB2, Phosphorous Bronze.

Others: Mild Steel, 630 i.e. 17-4 PH, Hot Die Steel (H 11/13/21), Tool Steel P 20 (1.2311 & 1.2378)

Applications: Machined Components, Pump Shafts, Valves, Fasteners, Machine Tools, Dairy Equipment's, Surgical & Medical Parts, Threaded Bars, Studs, Bolts, Pins, Hinges and Handles.



TUBES

Sizes (Seamless): 6mm OD to 60mm OD

Sizes (ERW): 6mm OD to 60mm OD

Wall Thickness: 0.5mm to 20mm

Specifications: ASTM A/ASME SA213/A249/A269/A312/A358 CL. I to V ASTM A789/A790

Material:

Stainless Steel:

200: 201, 201Cu, 202, 202Cu.

300: 303, 304, 304L, 304H, 310, 316, 316L, 316Ti, 317, 317L, 321, 347.

400: 409Ti, 410, 420, 420B, 416, 430, 430F, 431.

Carbon Steel: BS/3059/90/Part I/320, BS/3059/90/Part II/360, BS/3059/90/Part III/440, ASTM A210/A-1/C, DIN/17175/ST35.8/ST45.8, DIN 2391 ST 35/45/52, ASTM A178/A/C/D, BS 6323 Part V/1/2/3

Duplex Steel: 2205, 31803, UNS S31803 (F51), UNS S32205 (F60/1.4462)

Super Duplex: 2507, UNS S32750 (F53/1.4410), S32760 (F55/1.4501), UNS S32550, UNS S39274

Alloy Steel: ASTM A335 Gr. P5/ P9/ P11/ P22/ P91.

Nickel Alloys: Inconel, Monel, Titanium, Tantalum, Bismuth, High Speed Steel, Hastalloy C276.

Non Ferrous Metal: Copper, Brass, Bronze, Zinc, Lead, Aluminum

Make: TubaCex, Sandvik, Sumitomo, Jindal, MSL, ISMT, PSL, OCTL, Ratnamani, Welspun, Tenaris, Schoeller bleckmann, RathGibson, Schulz, Marcegaglia, Mueller Copper Products, TPCO, Corus, Mahalaxmi Seamless, Kobe, Nakata, and many more.



INSTRUMENTATION FITTING & VALVES

Tube Fittings:

Tube to Male Pipe Thread:

Male Connector, Bulk Head Male Connector, Male Elbow, 45 Male Elbow, Male Branch Tee, Male Run Tee.

Tube to Female Pipe Thread:

Female Connector, Bulk Head Female Connector, Female Elbow, Female Run Tee, Female Branch Tee

Tube to Tube:

Union, Reducing Union, Bulkhead Union, Union Elbow, Union Tee, Union Cross.

Port Connector:

Reducer, Bulk Head Reducer, Port Connector, Reducer Port Connector, Male Adapter, Female Adapter

Tube Ends: Cap, Plug.

Weld Fittings:

Tube Socket Weld Union, Male Pipe Weld Connector, Tube Socket Weld Elbow, Male Pipe Weld Elbow-

Special Fittings: Integral Flange Connector

Spare Components: Back Ferrule, Front Ferrule, Nut

Size: 1/8" to 1" & 4mm to 25mm

Pipe Fittings

Close Nipple, Hex Nipple, Hex Reducing Nipple, Hex Long Nipple, Adaptor, Reducing Adaptor, Hex Coupling, Nipples, Hex

Reducing Coupling, Elbow, Tee, Cross, Plug

Size: 1/8" to 2"



VALVES

Ball Valve:

Size: 1/8" to 1"

Type: 2/3/4/5 way, 1/2/3 piece, Quarter/Half/Full turn i.e. 'L' port (90), 'T' port (full turn)

End Connections: NPT, BSP, BSPT Thread Male/Female connections

Application: Gas Sampling lines, Pneumatic systems, Industrial R O Plants

Needle & Gauge Valves:

Needle Valves are specially designed with packing below the threads. This Design increases the life of the packing & Spindle Threads.

Size: 1/8" to 1" with Double Ferrule Tube Connection

End Connections: NPT, BSP, BSPT Thread Male/Female connections with max. Working pressure 10,000psi.

Others: Manifold Valves, Forged Steel Valve, Globe Valve, Diaphragm Valve

Material:

Stainless Steel: 201, 201Cu, 202, 202Cu, 303, 304, 304L, 304H, 310, 316, 316L, 316Ti, 317, 317L, 321, 347, 409Ti, 410, 420, 420B, 416, 430, 430F, 431.

Carbon Steel: A105, A181, A350 LF2/LF3/LF6, A694 F42/F46/F52/F56/F60/F65/F70.

Duplex Steel: 2205, 31803, UNS S31803 (F51), UNS S32205 (F60/1.4462)

Super Duplex: 2507, UNS S32750 (F53/1.4410), S32760 (F55/1.4501), UNS S32550, UNS S39274

Nickel Alloys: Inconel, Monel, Titanium, Tantalum, Bismuth, Hastalloy.

Non Ferrous Metal: Copper, Brass, Bronze, Zinc, Lead, Aluminum, Gun Metal



AIR HEADERS



Size: As per the Customers' Requirement & Specifications

Description: These air headers/distribution manifolds are equipped with Needle/ Ball valves and prime quality materials. These can be easily mounted on wall or on pipe stand and available up to 2 x10 outlets with equal spacing & positioned to meet specific requirements.

Material: All Grades in Stainless Steel, Carbon Steel, Alloy Steel

SYPHONS



Size: 1/4" to 1" pipe, sch-40, 80,160 & XXS

End Connections Socket Weld, Screwed, NPT, BSP Male/Female, Swivel type.

Material: Manufactured from seamless Stainless Steel, Carbon Steel & Alloy Steel pipes

Applications: High Temperature & High Pressure Steam application.

CONDENSATE POTS



Size: As per the Customers' Requirement & Specifications

Description: These pots are available in pipe threads, connections are 3000# to 6000#, half coupling/socket weld connection mounted on 90 Degree angles (Extra connections can be furnished on customers requirement).

Material: Carbon Steel, Stainless Steel, Alloy Steel.

Available with electro polished, Zinc plated or special paint finish can be provided

THERMOWELL



Size: As per Customer's Requirement

Description:

A wide range of Thermowells for almost all temperature sensing requirement in High & Low Temperature, High Pressure, and High Velocity, Corrosive & Abrasive media can be offered.

Type:

Standard type & Customize configuration, Bar Stock Drilled/Fabricated, Flanged, Screwed, Weldon

Connection: Screwed (BSP / NPT) S/W, Flange.

Material: All Grades in Stainless Steel, Inconel, Monel, Brass, High Nickel Alloy, Carbon Steel, Duplex, Super Duplex etc.



PRECISION CNC TURNED COMPONENTS

Size: As per the Customers' Requirement & Specifications

Description: CNC Turned Components are an integral part of many machines & need to be perfectly made to increase the productivity of any machine where they are inserted.

Our company offers a large assortment of Precision CNC Turned Components that are capable to meet all the International Standard Parameters which is as per the Customers' Requirement & Specifications

Application: Gearboxes, Automobile Industry, Hydraulic Industry, Nozzle Industry, Surgical Industry, Oil & Gas Industry, Food & Dairy Industry.

Material: All Grades in Stainless Steel, Inconel, Monel, Brass, High Nickel Alloy, Carbon Steel, Duplex, Super Duplex etc.



TUBE & PIPE CLAMPS



Size: 1/8" to 6"

Description: It eliminates vibrations due to its unique constructions.

Material: These clamps are available in HDPE/PP body with top & bottom steel plates are supplied.

FASTENERS



We are renowned in the industry as a leading Manufacturing & Exporting a Quality assured assortment of industrial fasteners. Our range of fasteners are: Nuts, Bolts & Studs, and Washers

Material: All Grades in Stainless Steel, Inconel, Monel, Brass, High Nickel Alloy, Carbon Steel, Duplex, Super Duplex etc.

SHEETS, PLATES & COILS:



Size: 0.10mm to 4mm and 5mm to 100 mm in thickness.

Form: Sheets, Plates, Coils, Strips, Profile, Circle, Ring, Flats.

Finish: Hot Rolled (HR), Cold Rolled (CR), 2B Finish, 2D Finish, Met Finish, 2B Met Finish, BA Finish, MET PVC Finish, BA PVC Finish, NO8 PVC Finish, Galvanized Coils, CRFH (Cold Rolled Full Hard) Coils.

Material: Stainless Steel, Carbon Steel, Duplex, Super Duplex, Alloy Steel, Inconel, Monel, Titanium, Tantalum, Bismuth, Hastalloy, Copper, Brass, Aluminum, Bronze, Zinc, Lead.

WIRES



Size: 0.10 mm to 9.00 mm (0.004” to 0.350”)

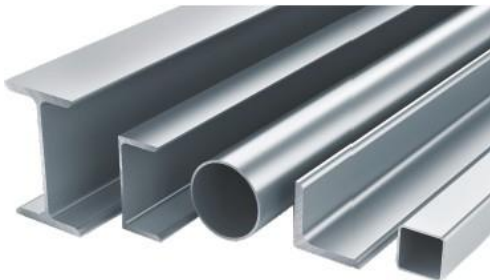
Type: EPQ Wires, Spoke Wires, Filter Cage Wire, Rope Wire, Nail Wires, Mesh Wire, Scrubber Wires

Finish: Bright Drawn, Bright Shiny, Matt Drawn, Coated, De-coated

Material: Stainless Steel, Carbon Steel, Duplex, Super Duplex, Alloy Steel, Inconel, Monel, Titanium, Tantalum, Bismuth, Hastalloy, Copper, Brass, Aluminum, Bronze, Zinc, Lead.

Application: Staples, Lashing Wires, Steel Balls, Needles, Kitchenware’s, Basket, Cable Trays and many others

STRUCTURES



We are engaged as a leading supplier of tubular steel, hollow sections like: Square Hollow Sections (SHS), Rectangular Hollow Sections (RHS), Circular Hollow Sections (CHS), Angles, Channels, and Beams which are available in metric sizes in standard lengths ranging from 10 mtr to 12 mtr

□ PACKAGING

Pipe Fittings, Valves, Components, Fasteners

All Products are first wrapped with either Bubble Sheet or Plastic Film and then packed into Corrugated Box, Wooden Box and Wooden Pallets.

Bars, Pipes, Sheets, Coils.

Bright Bars, Pump shaft and Precision Bars are packed in wooden boxes with nylon ring at equal distance.

Each Box not weighing more than 500 Kg to 700 Kg. Bars are placed layer by layer and each layer are separated by placing oil paper in between.

Bright Bar, Pipes and other Long Products are also wrapped in HDPE Plastic weighing not more than from 500 Kg to 1000 Kg and strapped with Signode strips.

Wires

Fine Wires can be supplied on Plastic spools or wrapped in Plastic Film or HDPE.



□ QUALITY ASSURANCE

Quality Assurance at **Seven Ocean Steel** starts with understanding the Customers Requirement and continues till the customer is completely satisfied with the delivery of products and services.

These products are manufactured using advanced Technology & latest Machinery & Every person in the organization strives hard to deliver “**Excellence**” to the customer by executing each process better than the best.

Our “**Customer – First**” approach sets us apart from the competition which helps us to believe in long – term & mutually beneficial relationship with our customers.

Quality Control procedures are well defined and thoroughly implemented

Incoming Inspection:

Incoming Raw Materials are the foundation for the final product. We make sure that we start with the best raw materials. Our suppliers are well-informed with our quality requirements. Raw Materials are inspected for:

- Chemical & Mechanical Properties
- Surface Quality

In-Process Inspection:

Procedures are defined to the minutest details. These procedures enable Operators, Supervisors & Quality Control Inspectors to produce the best quality products. In-process Materials are inspected for:

- Dimensional properties such as tolerance, lobbing, out-of roundness, length, straightness
- Suitable Fixtures are used to maintain Dimensions Accuracy.
- Mechanical Properties such as Tensile, Elongation, Yield, Reduction of Area, Hardness, Ultra Testing.
- Surface Finish

Finished Goods Inspection:

The Quality Assurance team in the finished goods department - we call them “**Seven Ocean Internal Customer**”.

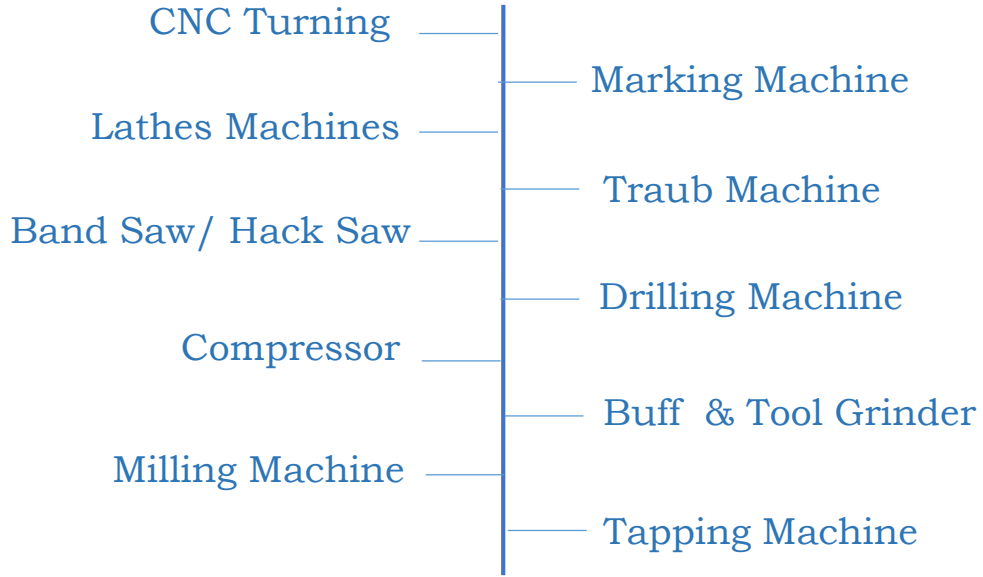
They inspect materials from the customer’s perspective. Finished Goods are inspected as per customer specification for:

- Surface Finish
- Dimensional Properties such as Tolerance, Lobbing, Out – Of - Roundness, Length, Straightness, Properties,
- Packing, Color Coding, Marking.

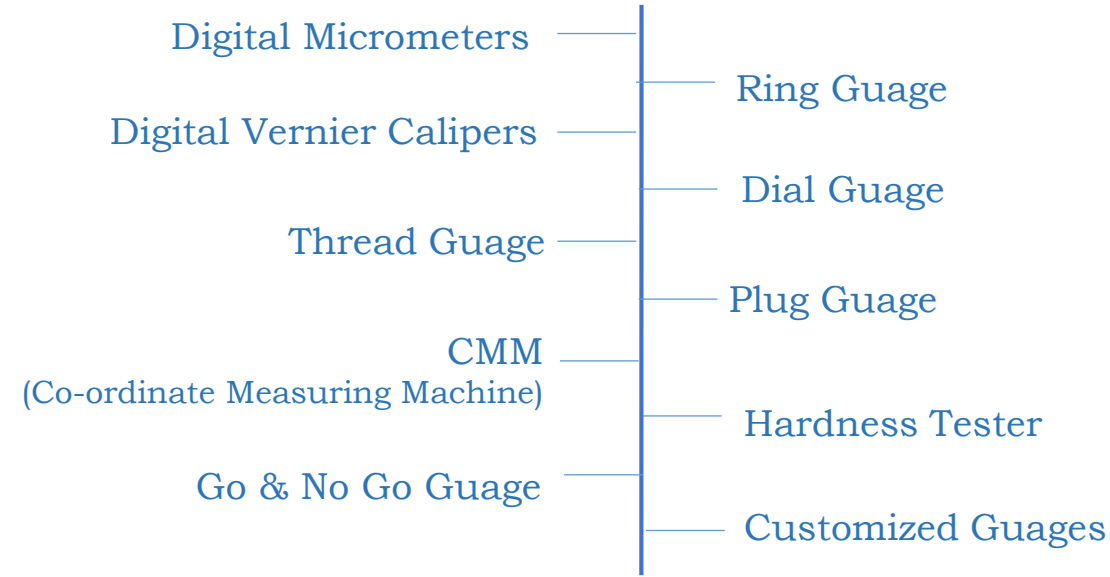
“Customers Are Wheels of An Organization”.

□ INFRASTRUCTURE

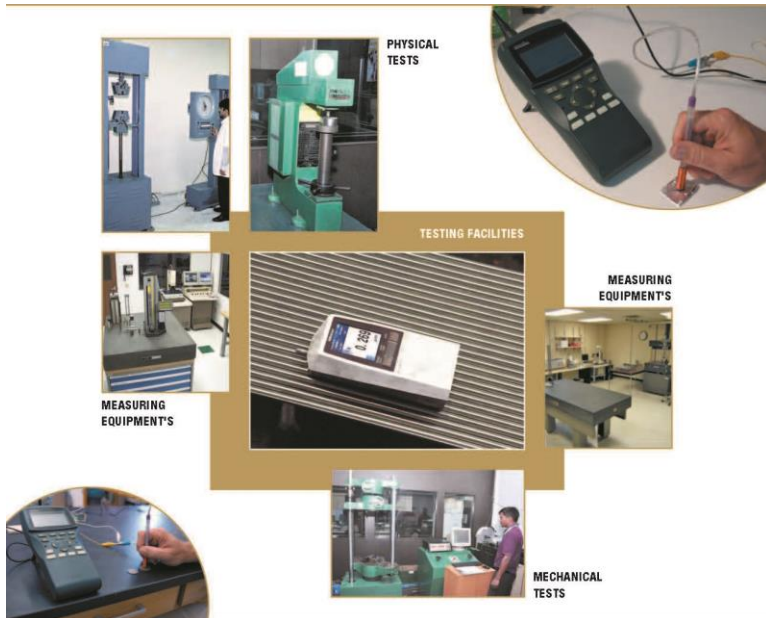
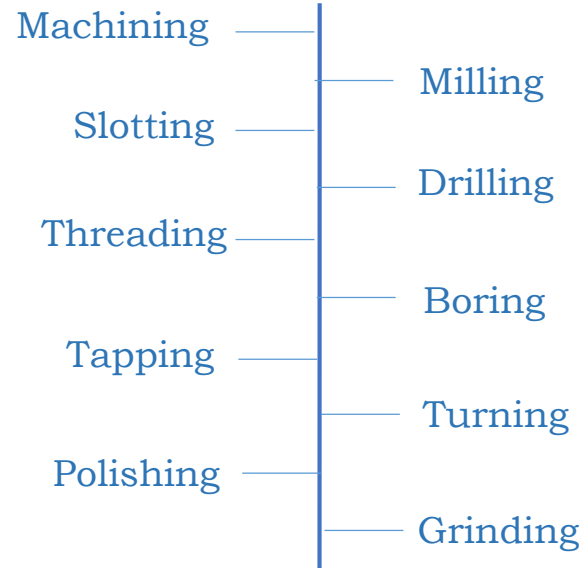
Machines



Inspection Instruments



Process





Registered Office:

13/21, 3rd Panjarapole, Floor 2nd,
Seth Virchand Umarsi Bldg,
Office no.: 205, Mumbai: 400 004

Works Address:

C1B-11&12, GIDC,
Umbergaon – 396 171,
DIST. Valsad, Gujarat (India).

Stockyard Address:

Plot no.: 1802 & 1803
KWC, Kalamboli,
Navi Mumbai

Contact Details.:

Ashwin Mehta: +91 9930 354 666

(B.Tech – Mechanical, MBA – Finance)

Email: ashwin@sevenoceansteel.com **Web.:** www.sevenoceansteel.com

